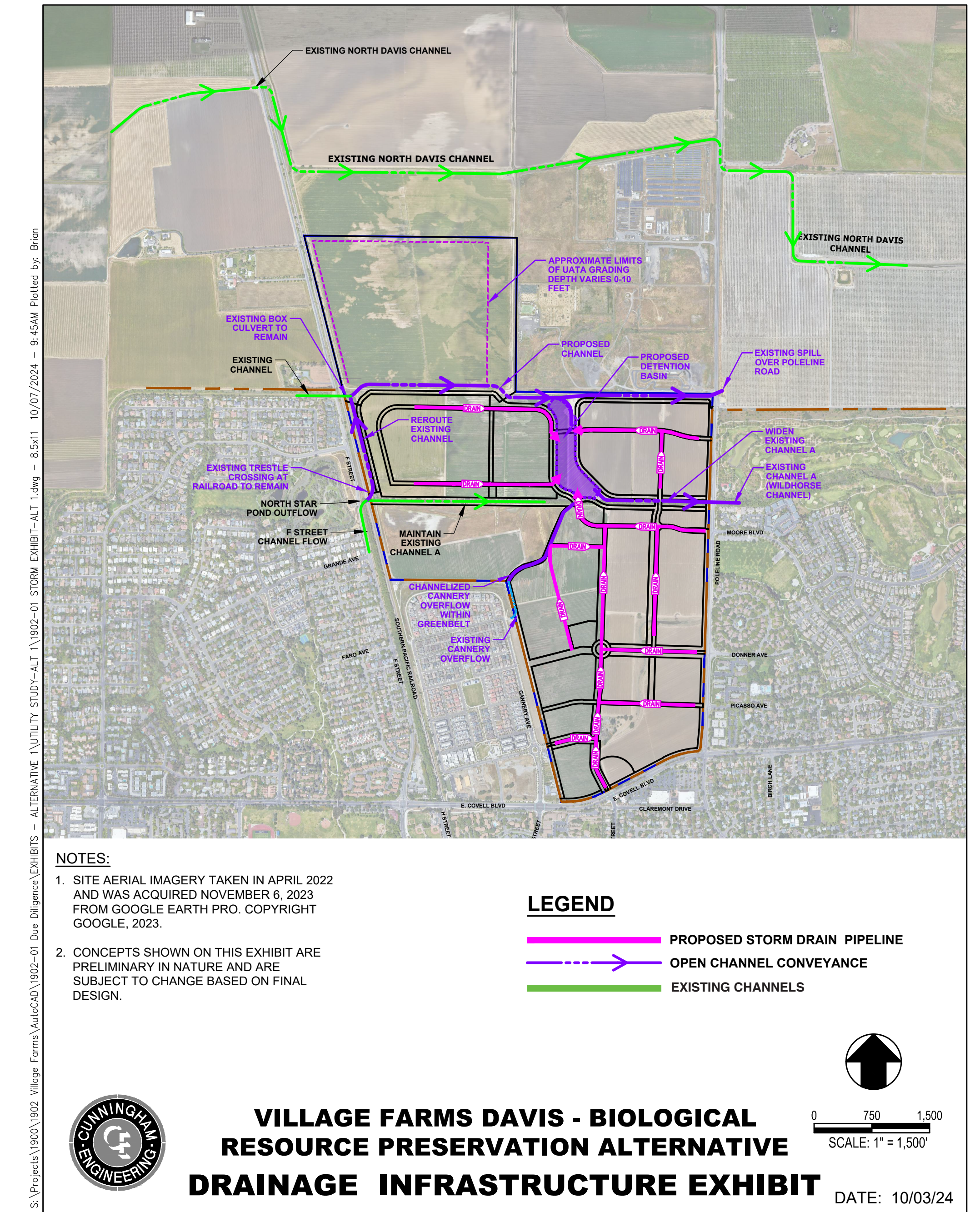
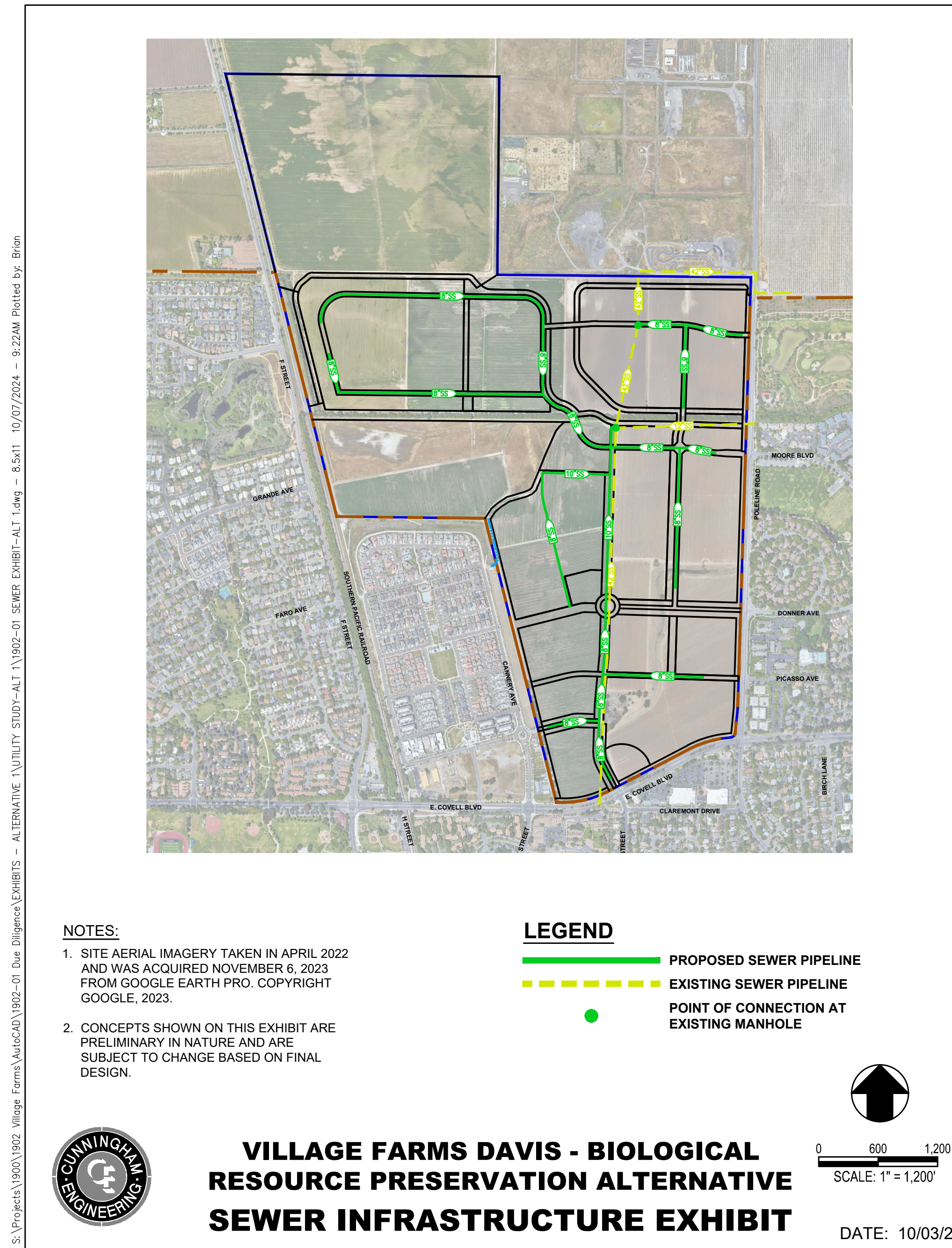
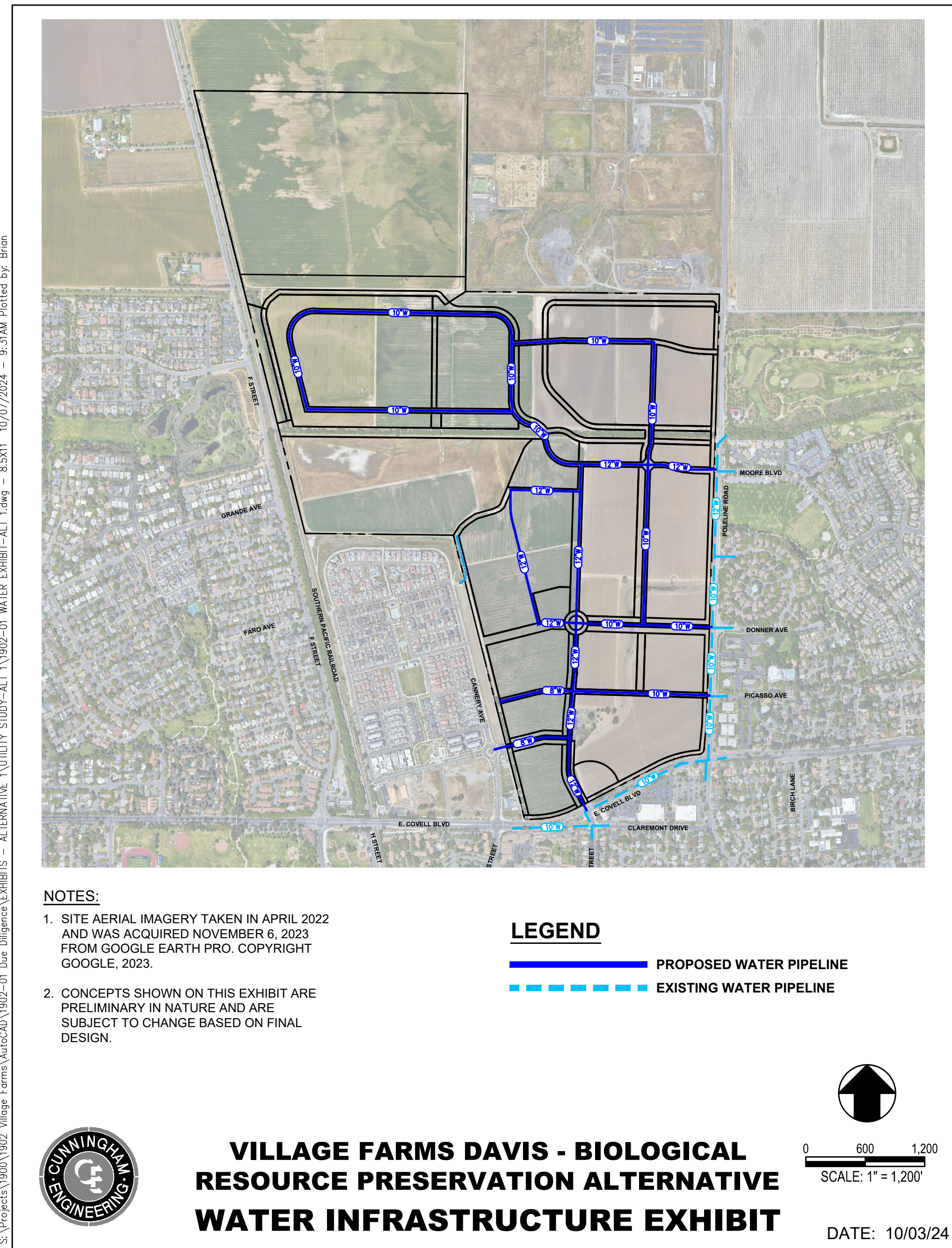


INFRASTRUCTURE - Water, Sewer & Storm Drainage

Immediately adjacent to existing City of Davis sewer and water infrastructure.
No significant new offsite infrastructure will be required to serve the project.



An SB610 Water Supply Assessment (WSA) has been completed by the City in support of the project application. Based on the projected water supply vs the project water demand there will still be adequate water supply for the proposed BRPA project by the City of Davis.

The City of Davis has completed a capacity analysis of the existing Davis Waste Water Treatment Plant (WWTP1) and the associated impacts of the Village Farms Davis project. This study concluded that there are no WWTP process capacity deficiencies as a result of the project.

The development of the project includes a new conveyance channel and a centralized storm water detention basin which provide storm water detention to mitigate for the increase in peak flow from the development and provides storage mitigating for the increased runoff volume.